

Models 6550 & 6555

Expert tools for testing insulation safely and accurately; ideal for use on rotating equipment and machinery operating at higher voltage



SPECIFICATIONS

MODELS	6550	6555
INSULATION TESTS		
Test Voltage	500V 1000V 2500V 5000V 10,000V 15,000V	10kΩ to 2000GΩ (2TΩ) 10kΩ to 4000GΩ (4TΩ) 10kΩ to 10,000GΩ (10TΩ) 10kΩ to 15,000GΩ (15TΩ) 10kΩ to 25,000GΩ (25TΩ)
Fixed Test Voltages	500/1000/2500/5000/ 10,000V	500/1000/2500/5000/ 10,000/15,000V
Variable Voltages	Variable: 40V to 10kV Three user programmable voltage schemes	Variable: 40V to 15kV Three user programmable voltage schemes
Ramp Mode	Programmable ramps: start voltage/end voltage/duration	
Ramp Configuration Range	40 to 1100V/500 to 10,000V	40 to 1100V/500 to 15,000V
Step Mode	Up to 10 steps (value and duration configurable for each step)	
Voltage Measurement After Test	0 to 2500V _{ac} ; 0 to 4000V _{dc}	
Capacitance Measurement	0.05 to 9.999μF/10.00 to 49.99μF	
Leakage Current Measurement	0 to 8mA	
Discharge After Test	Yes/Automatic	
Additional Test Stop Modes	I-Limit Early-Break Timer	
		Programmable: 0.2 to 5mA di/dt Up to 99 minutes 59 seconds
Burn Mode	Constant testing	
Ratio Calculation	PI, DAR, DD	
Calculation of R at ref. T°	Yes	
Measurement Display Filter	3 filters with 3 possible time-constants	
Graphs on Display	R(t)+v(t); i(t); i(v)	
Storage	256 registers, stores 80,000 points: R, V, I and date	
Communication	USB optically-isolated port	
PC Software	DataView® software	
Power Supply	NiMH rechargeable batteries, two 9.6V 4Ah battery packs charging by external voltage: 90 to 260V; 50/60Hz	
Battery Charging	Battery charging allowed while performing insulation measurements	
Electrical Safety	1000V CAT IV; IEC61010-1 and IEC 61557	
EMC, Mechanical Protection, Altitude	EN 61326-1, IP54, 3000m	
Dimensions/Weight	13.39 x 11.81 x 7.87" (340 x 300 x 200mm)/approx. 6.2kg (excluding accessories)	



Read our technical tips about Insulation Resistance Testing



PRODUCT INCLUDES

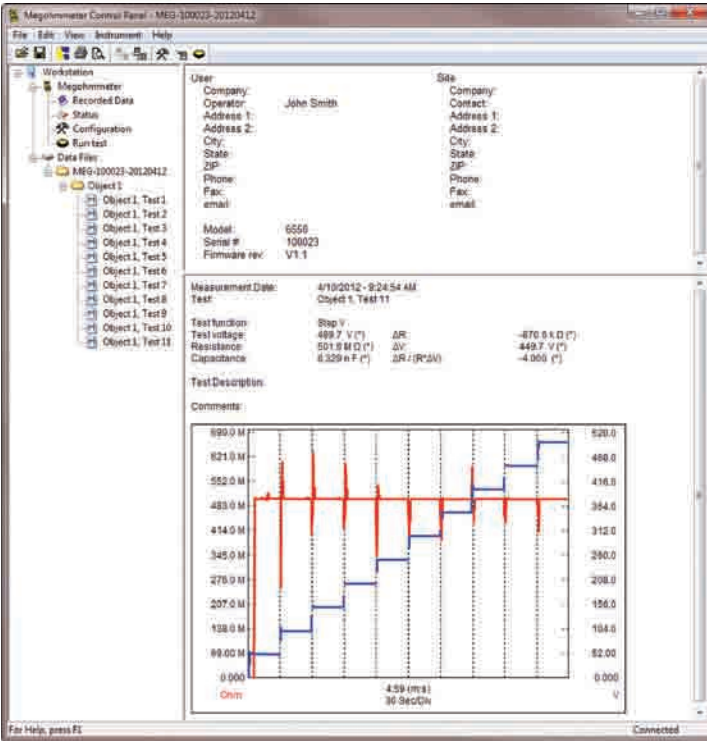
► **DataView Software®**
Included with
Models 6550 & 6555



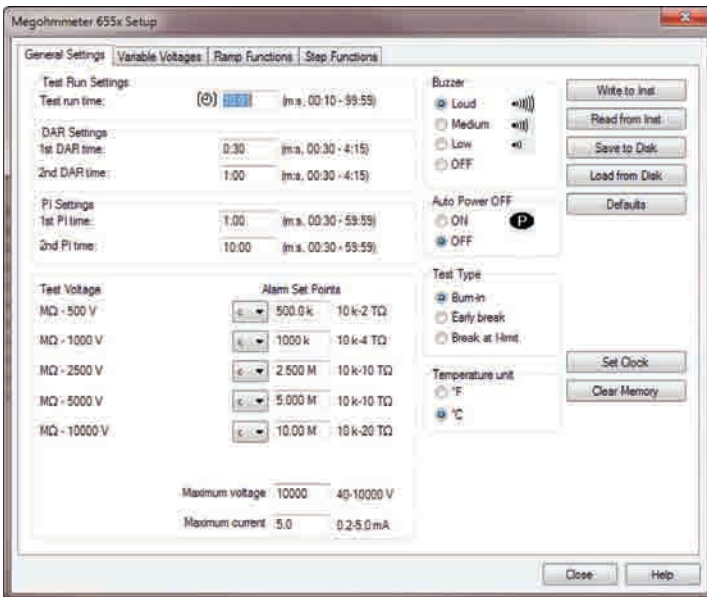
Includes one red, blue and black 9ft 15kV integral lead (blue), one red, blue and black alligator clip (1000V CAT IV), one red and blue test probe (1000V CAT IV), optical USB cable, US 115V power cord, small classic tool bag, user manual

Models 6550 & 6555

DataView® Displays



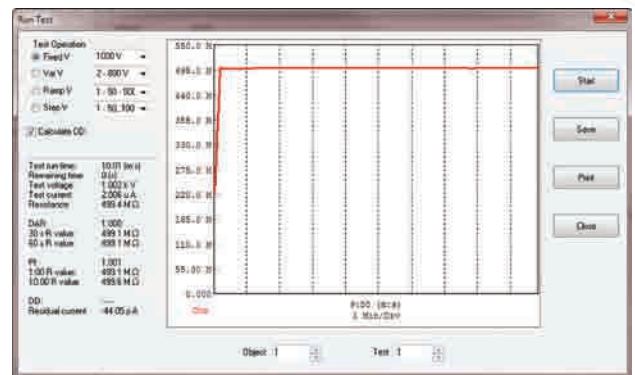
Easy identification of all stored test results.



Clear and straight forward set up of parameters.

FEATURES

- Wide measurement range from 10kΩ to 30TΩ
- Fixed or programmable test voltage from 40V to 10/15kV
- 5mA charging current
- Step voltage testing
- Ramp voltage testing
- Large, backlit LCD screen with digital display, bargraph and R(t)+v(t), i(t) and i(v) graphs
- Automatic calculation of DAR / PI / DD /ΔR (ppm/V) ratios
- Multiple test modes: voltage ramp and step with “burning”, “early break” and “I-limit” modes
- 3 filters to optimize measurement stability
- Calculation of R at a reference temperature
- Storage of 80,000 measurements
- Optically-isolated USB communication for transfer onto PC and report generation with the DataView® software



Real time display of measurement results.

CATALOG NO.	DESCRIPTION	PRICE	NIST CALIBRATION
2130.31	Megohmmeter Model 6550 (Graphical, Analog Bargraph, Backlight, Alarm, Timer, 500V, 1000V, 2500V, 5000V, 10kV, Ramp, StepV, Variable, Auto DAR/PI/DD, USB w/DataView® software)	TBD	
2130.32	Megohmmeter Model 6555 (Graphical, Analog Bargraph, Backlight, Alarm, Timer, 500V, 1000V, 2500V, 5000V, 10kV, 15kV, Ramp, StepV, Variable, Auto DAR/PI/DD, USB w/DataView® software)	TBD	